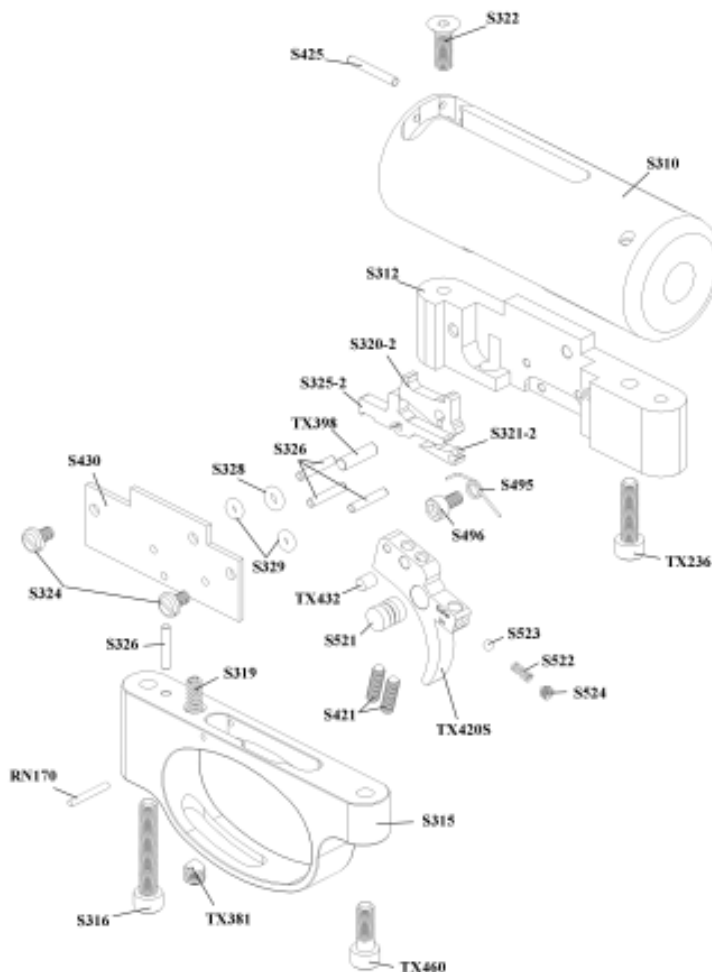


## PART LIST <> TRIGGER UNIT

PART NO.	DESCRIPTION.	QTY	PART NO.	DESCRIPTION.	QTY
S310	STRIKER BODY	1	S420G	TRIGGER BLADE (GOLD)	1
RN170	TRIGGER STOP PIN	1	S421	TRIGGER ADJUSTMENT SCREW	2
S312	CHASSIS	1	S425	HANDING PIN	1
S315	TRIGGER GUARD	1	S430	CHASSIS COVER PLATE	1
S316	TRIGGER GUARD SCREW (large)	1	S495	TOP SEAR SPRING	1
S319	SPRING	1	S496	TOP SEAR SPRING SCREW	1
S320-2	TOP SEAR	1	S521	SAFETY BUTTON	1
S321-2	BOTTOM SEAR	1	S522	SAFETY BUTTON BALL	1
S322	CHASSIS FIXING SCREW (short)	1	S523	SAFETY BUTTON SPRING	1
S324	TRIGGER CHASSIS COVER SCREW	2	S524	SAFETY BUTTON SCREW	1
S325-2	MIDDLE SEAR	1	TX236	CHASSIS SCREW	1
S326	CHASSIS PIN (small)	3	TX381	TRIGGER WEIGHT OF PULL SCREW	1
S328	CHASSIS PIN SPACER (large)	1	TX398	CHASSIS PIN (large)	1
S329	CHASSIS PIN SPACER (small)	2	TX432	TRIGGER ADJUSTING SCREW LOCKING PAD	1
S420S	TRIGGER BLADE	1	TX460	TRIGGER CHASSIS SCREW	1





**PART LIST <> S410-C & S410-S**

<b>PART NO.</b>	<b>DESCRIPTION.</b>	<b>QTY</b>	<b>PART NO.</b>	<b>DESCRIPTION.</b>
RN102A	BOLT HSE FIXING SCREW	6	S505	MAG RET CLIP
RN113	BARREL FIXING SCREW	2	S507	FIRING VALVE BODY
RN135	BODY LOCATION SCREW	1	S515A	MAG OPERATING POST ASSY
RN191	LOCKING SCREW	1	S520	STRIKER
RN193	MAG RET CLIP SCREW	2	S520-1	STRIKER BUSH
RN234	SEALING RING	2	S525	MAIN SPRING SPACER (OPTION)
RN235	CYLINDER TUBE (CARBINE)	1	S530	MAIN SPRING GUIDE
S303	LOCKING SCREW	1	S536	BARREL (.177) & GAUGE MOUNT SEAL
S306	FIRING VALVE SPRING	1	S538	BARREL SEAL .22
S331	MAIN SPRING	1	S546A	LOADING BOLT ASSY .177
S335	CYLINDER (CLASSIC)	1	S546B	LOADING BOLT ASSY .22
S340	STRIKER GUIDE ROD	1	S550	SIDE PLATE
S345	LOADING BOLT SCREW SLEEVE	1	S555A	MAG ASSY .177
S355	LOADING BOLT SCREW	1	S555B	MAG ASSY .22
S360	FIRING POT	1	S560	CAMPLATE
S370	FIRING VALVE ASSEMBLY	1	S565	SIDE PLATE SCREW
S403A	BARREL .22 (CLASSIC)	1	S580	SOUND MODERATOR (OPTION)
S403B	BARREL .177(CLASSIC)	1	S581	MODERATOR SCREW
S403F	BARREL .22 (CARBINE)	1	S625	STOCK SCREW
S403G	BARREL .177 (CARBINE)	1	S630	BEECH STOCK RH
S427	BOLT HSE TO BODY SEAL	2	S631	BEECH STOCK LH
S459	MUZZLE END	1	S632	WALNUT STOCK RH
S465	BONDED SEAL	1	S633	WALNUT STOCK LH
S468	FEMALE SNAP CONNECTOR	1	S634	THUMBHOLE STOCK RH
S470	MALE SNAP CONNECTOR	1	S635	THUMBHOLE STOCK LH
S482	FRONT CYLINDER CLAMP	1	S640	PRESSURE GAUGE MOUNT
S483	CYLINDER END CAP	1	S641	GAUGE MOUNT SCREW
S484	FRONT CLAMP RING	1	S645	PRESSURE GAUGE
S490	FILLING VALVE BODY	1	S646	PRESSURE GAUGE SEAL
S500-2C	BOLT HSE .22 CARBINE	1	S650	LOADING BOLT BUFFER
S500-7C	BOLT HSE .177 CARBINE	1	S655	STOCK SCREW WASHER
S500-2S	BOLT HSE .22 CLASSIC	1	TX228	CYLINDER CLAMP SCREW
S500-7S	BOLT HSE .177 CLASSIC	1	TX239	MUZZLE END SCREW
S501	BOLT HSE BUSH .22	1		
S502	BOLT HSE BUSH .177	1		

PLEASE STATE YOUR RIFLE NUMBER IN ANY CORRESPONDENCE.